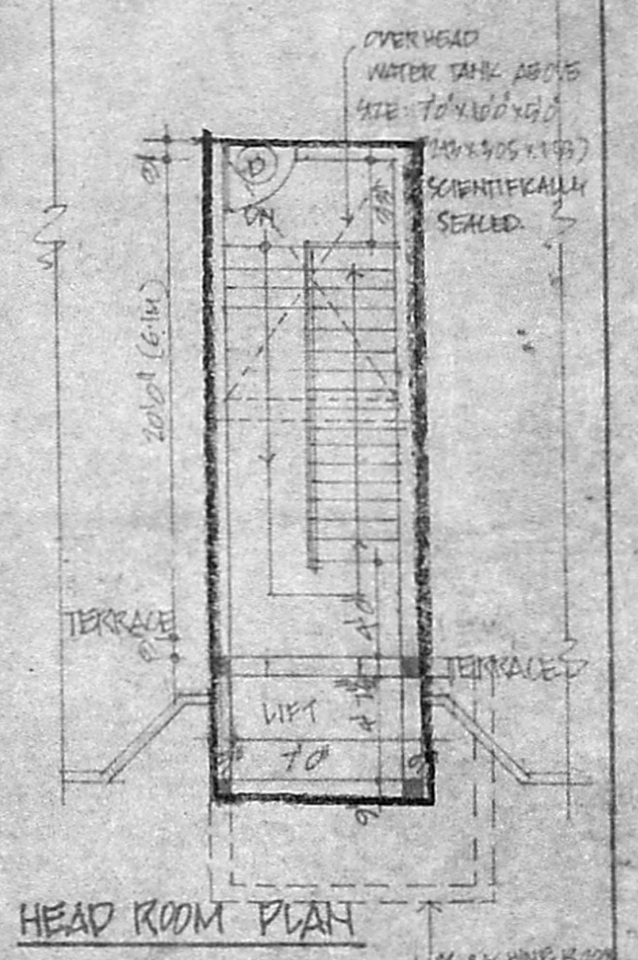


Revised Plan  
 At 26/08/52  
 Mr. J. Jayaram  
 21/01/53



- Calculated as:-
- 1. 12' 7" x 12' 0" = 227.90
  - 2. 25' 7" x 31' 3" = 810.26
  - 3. 13' 5" x 47' 4" = 645.41
  - 4. 47' x 53' 4" = 2241.54
  - 5. 9' 7" x 48' 9" = 473.21
  - 6. 8' 6" x 27' 3" = 231.62
  - 7. 14' 4" x 22' 9" = 326.91
  - 8. 29' 6" x 9' 6" = 280.25
  - 9. 5' 6" x 12' 9" = 70.13
  - 10. 16' 9" x 6' 9" = 126.52
  - 11. 9' 6" x 29' 6" = 280.25
- 570.54 sq ft or 530.71 m<sup>2</sup>

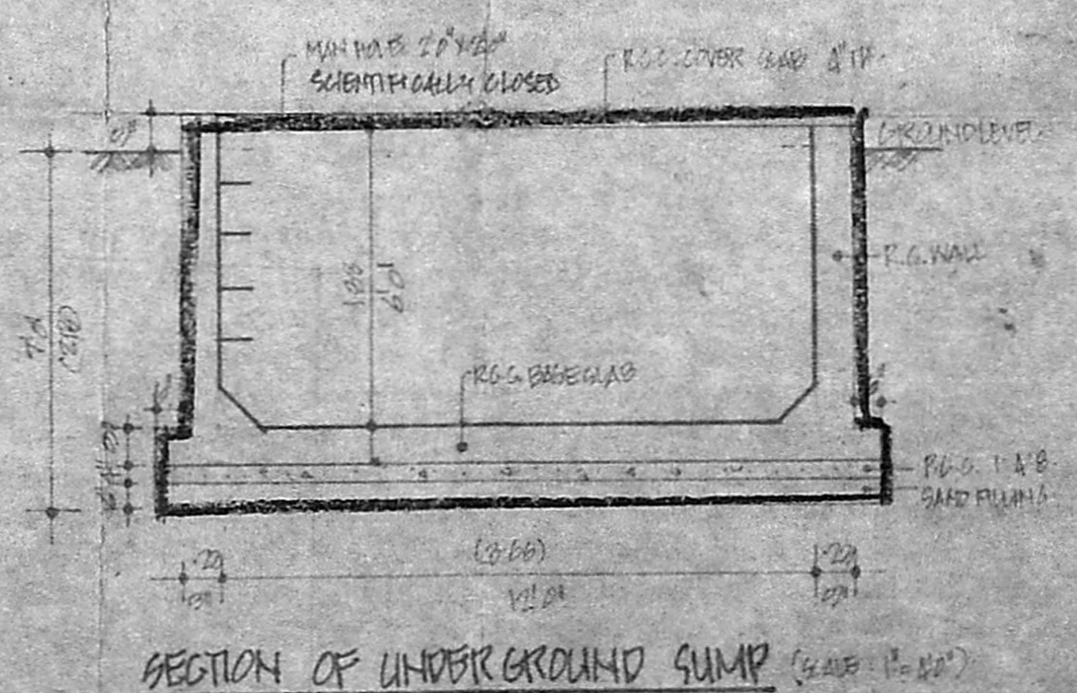
SITE CUM GROUND FLOOR PLAN

FF 112' 9" x 12' 0" = 227.90 sq ft  
 24' 9" x 31' 3" = 810.26  
 13' 5" x 47' 4" = 645.41  
 47' x 53' 4" = 2241.54  
 9' 7" x 48' 9" = 473.21  
 8' 6" x 27' 3" = 231.62  
 14' 4" x 22' 9" = 326.91  
 29' 6" x 9' 6" = 280.25  
 5' 6" x 12' 9" = 70.13  
 16' 9" x 6' 9" = 126.52  
 9' 6" x 29' 6" = 280.25

570.54 sq ft or 530.71 m<sup>2</sup>

FSI = 1186.15 / 1066.22 = 1.11%

Coverage = 530.71 / 1066.22 x 100 = 49.77%



TYPE	SIZE	DESCRIPTION
D	24 x 70	T.W. THROUGH DRAIN
D1	24 x 70	DO
D2	24 x 70	DO
W1	60 x 40	T.W. COVERED WINDOW
W2	60 x 40	DO
W3	50 x 40	DO
W4	50 x 40	DO
W5	50 x 40	DO
K.W.	20 x 80	KITCHEN WINDOW
P.W.	100 x 70	PORCH WINDOW
V	20 x 80	VENTILATOR

PROPOSED APARTMENTS AT 10<sup>TH</sup> AVENUE  
 HARRINGTON ROAD O/R NO: 359/13, R/O NO: 359/33, BALDUR NO: 21  
 CHETPUT, EGMORE DIVISION, NUNGAMBARKAM  
 TALUK, MADRAS DISTRICT.

COLOUR INDEX	AREA	STATE	HEIGHT
PROPOSED WORK	1066.22		
SITE BOUNDARY			
ROADS			

SCALE: 1" = 10'  
 DATE: 15-02-1952  
 PREP. BY: KAVEN  
 U.O. BY:

OWNER'S SIGNATURE	LICENSED SURVEYOR
<i>K. Venugopal</i>	<i>K. Venugopal</i>

K. VENUGOPAL  
 A.E.E. (Rtd)  
 CONSULTING CIVIL ENGINEER  
 LICENSE SURVEYOR CLASS I  
 CORPORATION OF MADRAS  
 3, NEELAKANDAN STREET  
 NUNGAMBARKAM (LAKE AREA)  
 MADRAS-600 034